

Feature -

Multiple keys and poles  
interlock and individual lock

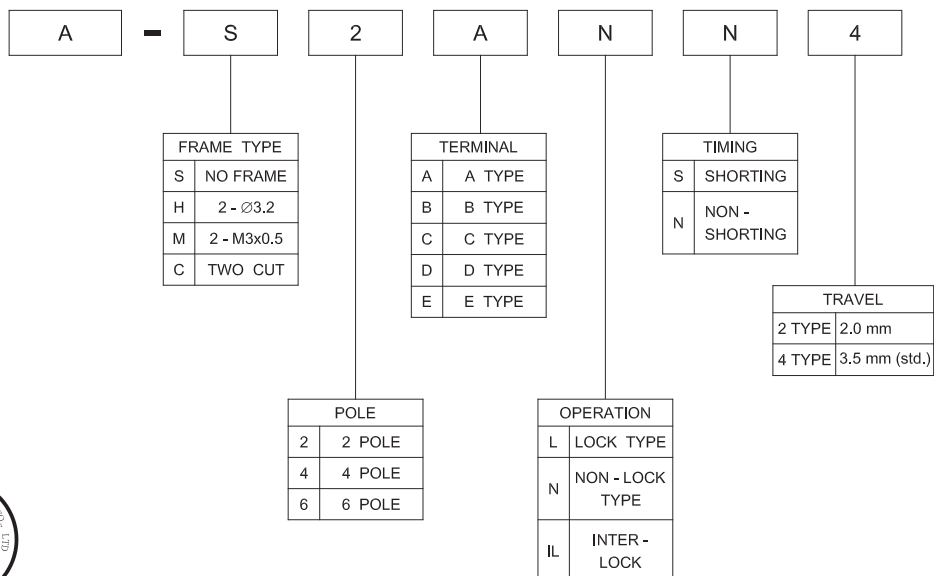
Application -

various switching purpose  
in all home electronic equipments  
and industrial electronic equipments

► SPECIFICATIONS

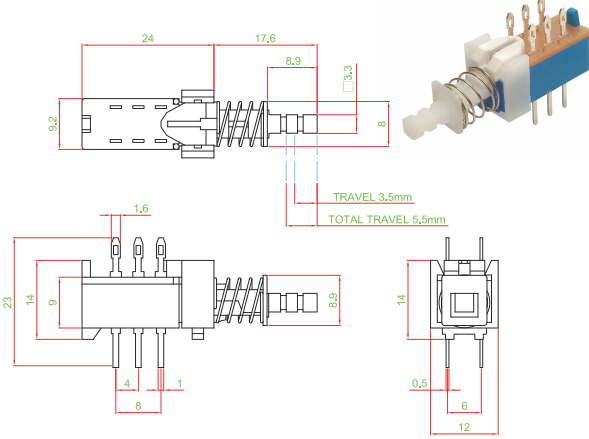
SWITCH SPECIFICATIONS	
POLE - POSITION	2P2T , 4P2T , Momentary and Lock Type are Available
CONTACT RATING	100 V AC , 0,5 A ; 250 V AC , 0,2 A ; 25 V D , 1A
CONTACT RESISTANCE	40 mΩ MAX. 1.5 V DC ; 100 mA , by Method of Voltage DROP
INSULATION RESISTANCE	100 MΩ MIN. 500 V DC
DIELECTRIC STRENGTH	Breakdown is not Allowable ; 500 V AC for 1 Minute
OPERATING FORCE	2P2T - 250 ± 100gf 4P2T - 350 ± 100gf
OPERATING LIFE	10,000 cycles
OPERATING TEMPERATURE RANGE	-20°C ~ 70°C
TOTAL TRAVEL	5.5 ( or 3.5 ) ± 0.3 mm

► HOW TO ORDER

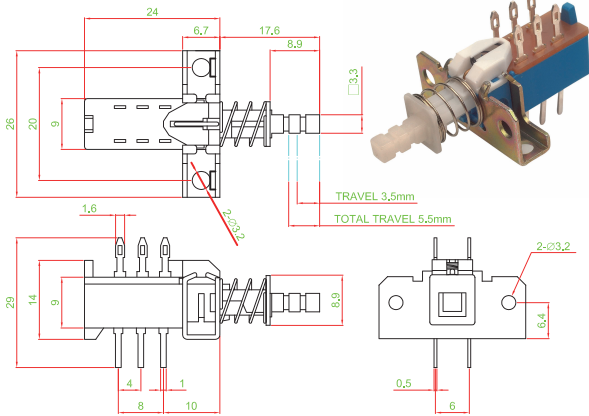


► DIMENSION

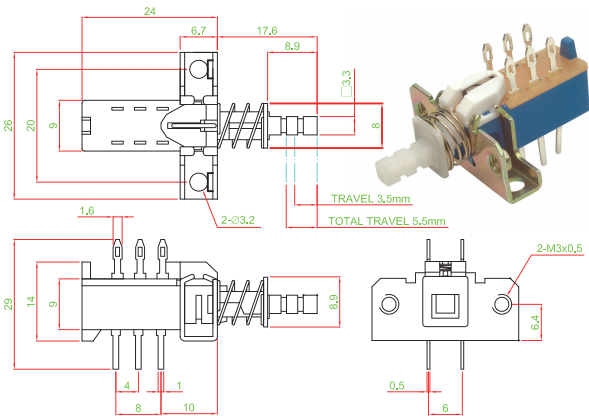
A - S2ANN4



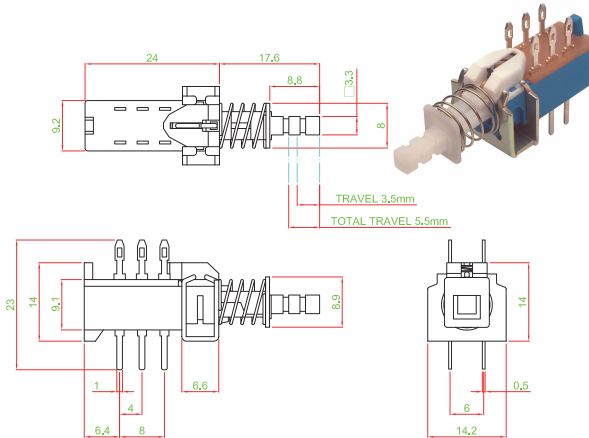
A - H2ALN4



A - M2ALN4

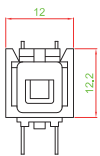


A - C2ALN4

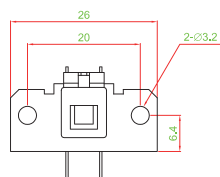


► FRAME TYPE

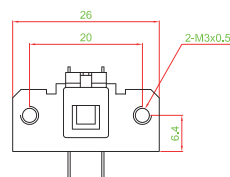
S TYPE



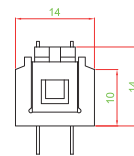
H TYPE



M TYPE

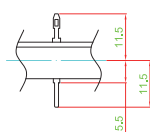


C TYPE

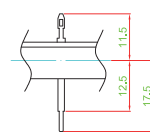


► FRAME TYPE

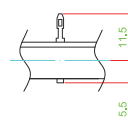
A



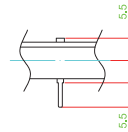
B



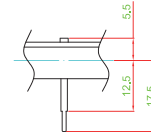
C



D



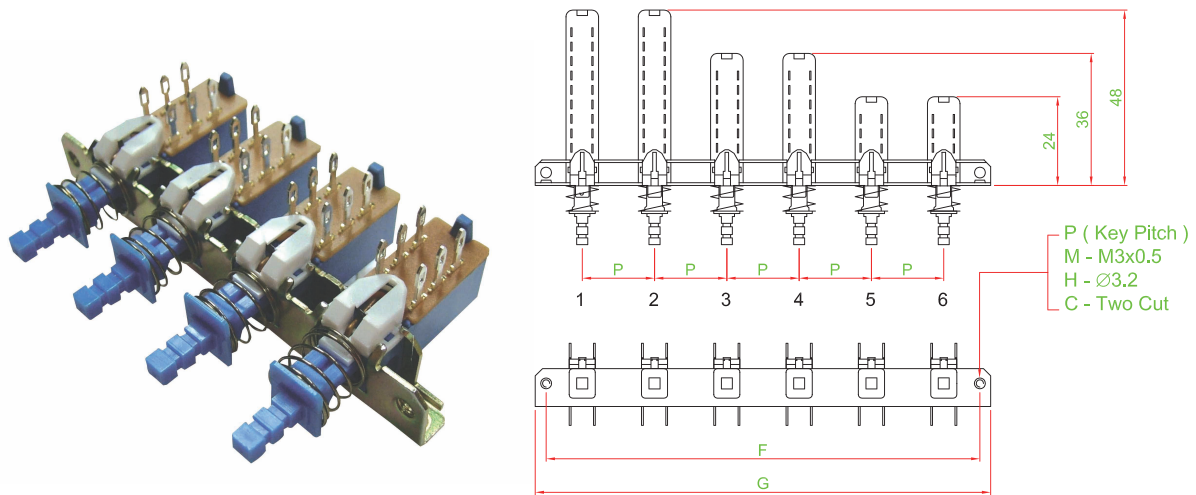
E





▶ P.C.B LAYOUT	▶ CIRCUIT	▶ POLE & LENGTH								
		<table border="1" style="margin-left: auto; margin-right: auto;"> <tr> <td>POLE</td> <td>2</td> <td>4</td> <td>6</td> </tr> <tr> <td>L(mm)</td> <td>24</td> <td>36</td> <td>48</td> </tr> </table> <p>▶ <b>MATERIAL</b></p> <ul style="list-style-type: none"> <li>■ ACTUATOR : POM</li> <li>■ TERMINAL : BRASS SILVER PLATING</li> <li>■ BASE FRAME : PA + GF</li> <li>■ SPRING : STAINLESS STEEL</li> </ul>	POLE	2	4	6	L(mm)	24	36	48
POLE	2	4	6							
L(mm)	24	36	48							

▶ INTER-LOCK & LENGTH



SIZE PITCH	1		3	5		7	9		11	13	
	G	F		G	F		G	F		G	F
10	26	20		46	40		66	60		86	80
12.5	24	18		51	45		76	70		101	95
15				56	50		86	80		116	110
17.5	F		F	61	55	F	96	90	F	131	125
20				66	60		106	100		146	140
10		36	30	56	50		76	70		96	90
12.5	2	38.5	32.5	63.5	57.5	6	88.5	82.5	8	113.5	107.5
15		41	35	71	65		101	95		131	125
17.5	F	43.5	37.5	78.5	72.5	F	113.5	107.5	F	148.5	142.5
20		46	40	86	80		126	120		166	160

▶ MULTI - KEY TYPE AND INTER-LOCK TYPE

FRAME TYPE    M  M3x0.5    H  Ø3.2    C  TWO CUT

KEY	1	2	3	4	5	6	7	8	9	10	11	12	13	14	15	16
OPTION / 選項																
POLE / 回路數																
TERMINAL TYPE / 端子																
OPERATING / 動作																
TIMING N / S																
TRAVEL / 行程																
KNOB																
PITCH / 間距	<input type="checkbox"/> 10mm <input type="checkbox"/> 12.5mm <input type="checkbox"/> 15mm <input type="checkbox"/> 17.5mm <input type="checkbox"/> 20mm <input type="checkbox"/> 25mm <input type="checkbox"/> 30mm															